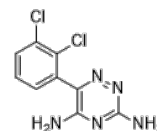


Product Name : Lamotrigine
Cat. No. : PC-27185
CAS No. : 84057-84-1
Molecular Formula : C₉H₇Cl₂N₅
Molecular Weight : 256.09
Target : Sodium Channel
Solubility : 10 mM in DMSO



Biological Activity

Lamotrigine (BW430C) is a potent and orally active anticonvulsant and antiepileptic agent, selectively blocks voltage-gated Na⁺ channels, stabilizing presynaptic neuronal membranes and inhibiting glutamate release.

References

M J Leach, et al. Epilepsia. Sep-Oct 1986;27(5):490-7.

Caution: Product has not been fully validated for medical applications. Lab Use Only!

E-mail: tech@probechem.com